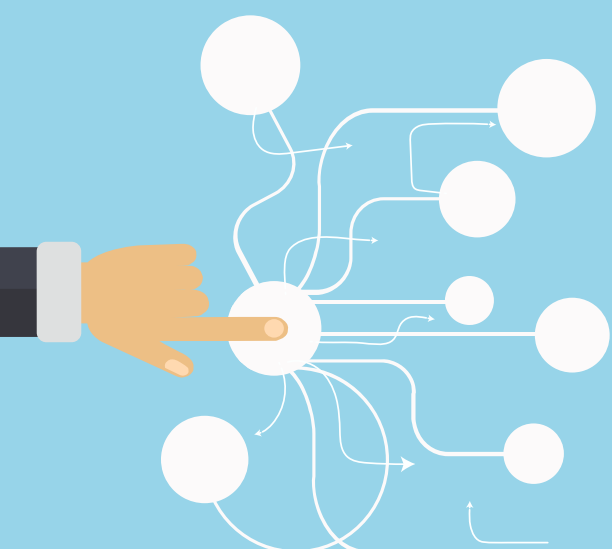




## WHAT IS THE **SHIN-NY** AND RHIO?

The State Health Information Network of NY (SHIN-NY) is a secure network for sharing electronic clinical records in New York State. OneCity Health will help partners to connect in 2017, enhancing the development of our integrated delivery system.



The SHIN-NY comprises **8** regional hubs (RHIOs - Regional Health Information Organization) and the New York eHealth Collaborative (NYeC)

NYeC is the technical hub that connects the RHIOs to allow for cross-RHIO data exchange. Once OneCity Health partners connect to one RHIO, then they are connected to the others through the SHIN-NY.

## WHY SHOULD ONECITY HEALTH PARTNERS CONNECT TO A **RHIO**?

- New York State's preferred vehicle to pass patient alerts and plans of care; it is also a DSRIP requirement for partners to connect to a RHIO. However, if a partner does NOT provide clinical services (e.g., social services only) or does NOT have an Electronic Medical Record (EMR), they are not required to connect to a RHIO
- Provide coordinated, collaborative care to patients and clients in an integrated delivery system
- Centralized analytics and data transfer between partners improves the quality of care we deliver to patients



## AFTER CONNECTING, ONECITY HEALTH PARTNERS WILL:

- Be able to access information from other providers
- Make patient data available to patients' other providers
- Receive notifications and secure messages