

Expansion of the Asthma Home-Based Environmental Program

Phase IV Contracting

March 12, 2019

NYC
HEALTH+
HOSPITALS

ONECITY
HEALTH

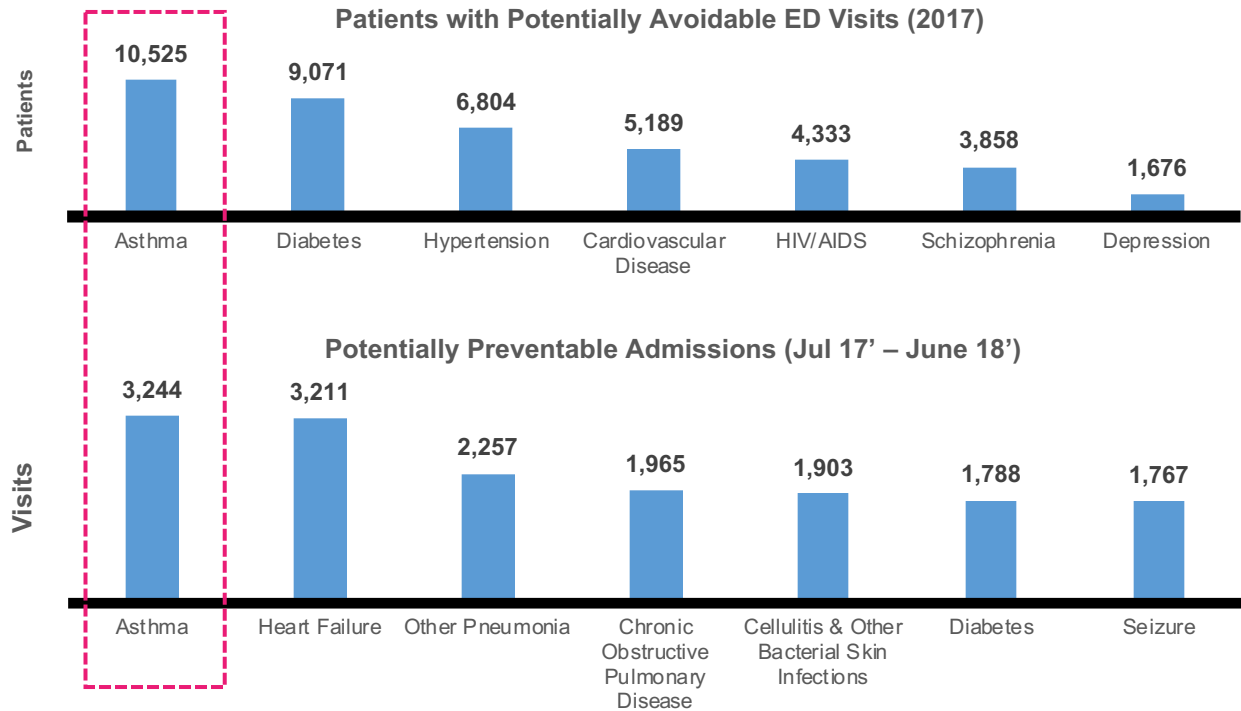
OneCity Health is taking a population-approach to contracting

Patients with asthma present the greatest opportunity to reduce potentially preventable utilization

Primary Goal

Reduce avoidable Emergency Department (ED) and Inpatient (IP) visits and admissions

Improve patient care and wellbeing by connecting patients to primary care and social services



Data Source New York State Claims Data

The Asthma Home-Based Environmental Program – Population & Care Settings

Expanded Patient Population & Care Settings

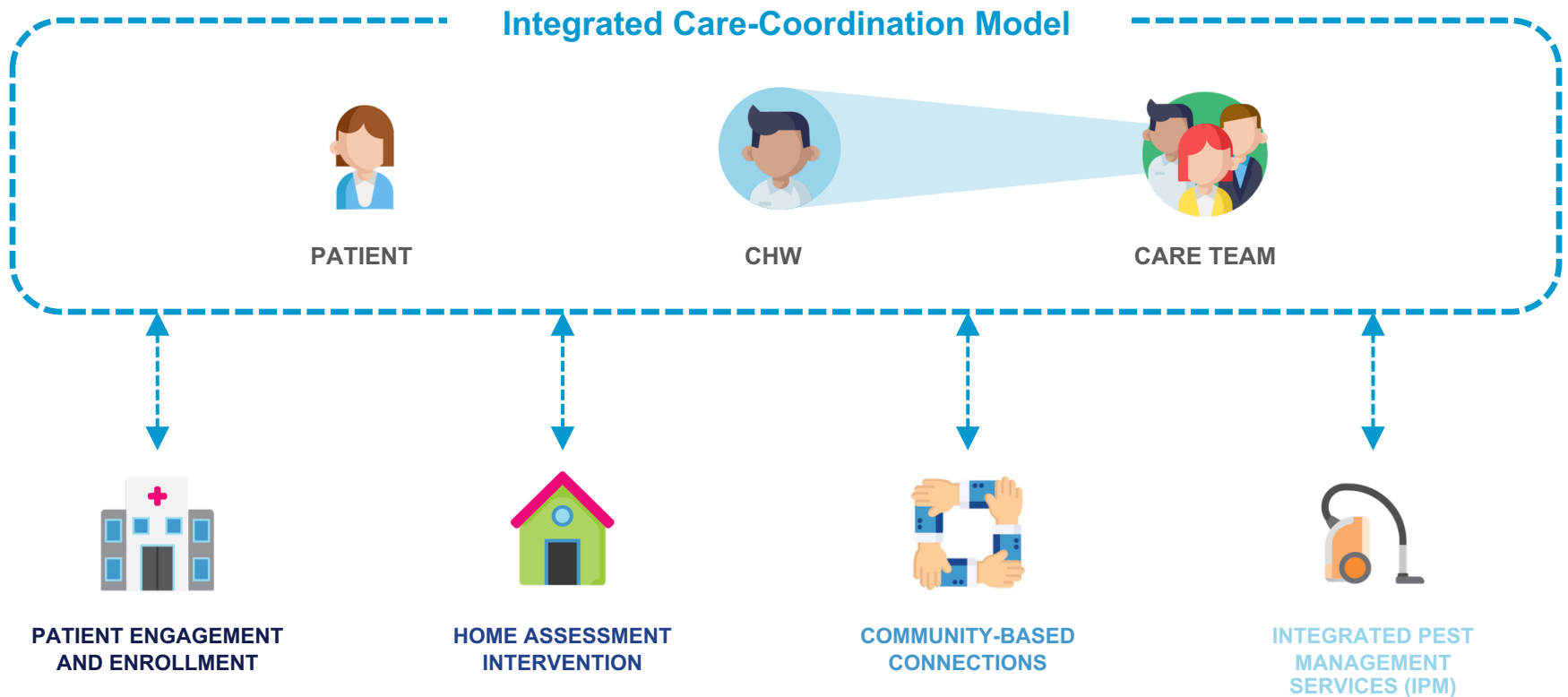
High Utilizing Patients

- Children and adults
- Repeated ED visits and/or IP admissions, with a primary diagnosis of asthma, who use multiple facilities, or are deemed to be at high risk for such utilization.

Care settings

- Outpatient Primary Care Clinic
- Specialty Clinic
- Acute Inpatient
- Emergency Department
- School-based Health Clinic

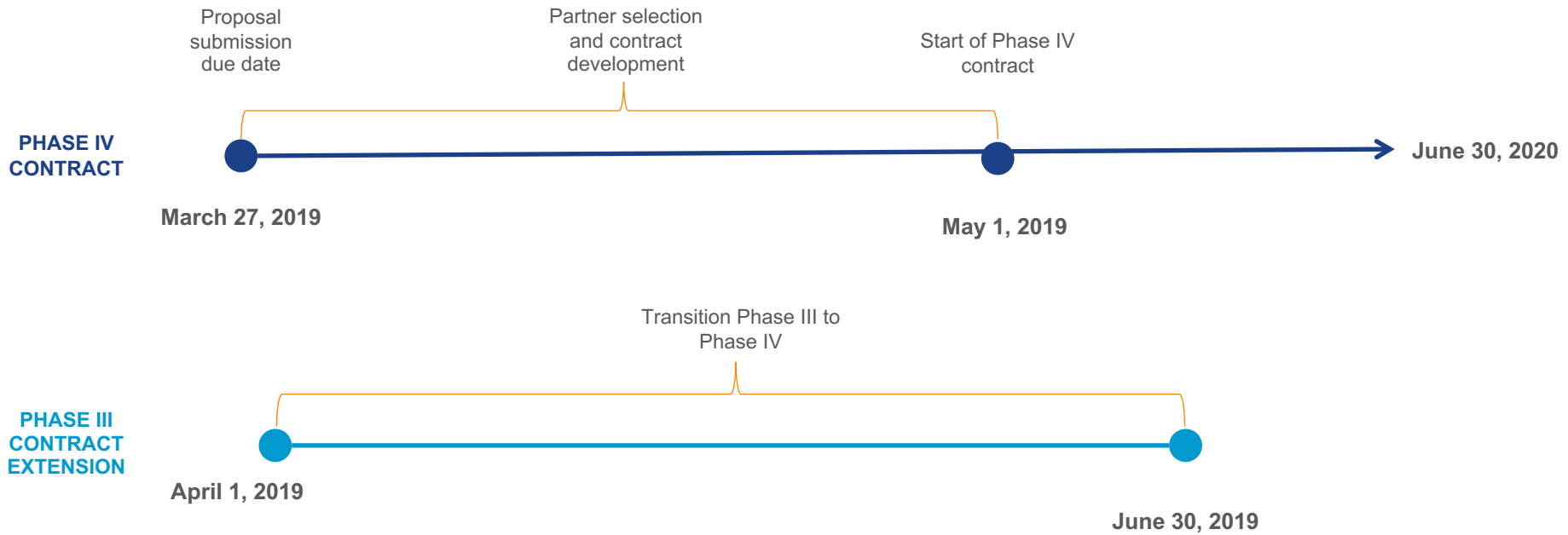
Community Health Worker-led model to reduce avoidable utilization for patients with asthma



Budget Example

CHW Team X	
Caseload: XX	
Personnel Services	Salary
Manager/Supervisor	\$
CHW 1	\$
CHW 2	\$
Title X	\$
Title Y	\$
Title Z	\$
Total Personnel	\$\$
Non-Personnel Services	
Item X	\$
Item Y	\$
Item Z	\$
Total OTPS	\$\$
Total Cost/Team (PS+NON-PS)	\$XXX
Total Cost/Patient:	\$XXX

Timeline



Evidence Based Research: Community Health Workers

Please follow the links below for research on the Community Health Worker (CHW) model:

<https://www.cdc.gov/dhdsp/pubs/guides/best-practices/chw.htm>

<https://www.onecityhealth.org/wp-content/uploads/CHWs-and-Asthma.pdf>

Questions?

Please Contact the OneCity Health support desk at

(646) 694-7090 (Monday through Friday, 9 a.m. - 5 p.m. ET) or
ochsupportdesk@nychc.org with questions any other time



NYC
HEALTH+
HOSPITALS

ONECITY
HEALTH

